

Accelerating business processes

The Vayusphere platform accelerates a corporation's repetitive, time critical, field oriented, and high value business processes by leveraging the power of *Presence* information and persistent communication technology. Vayusphere's products enable event-driven enterprise applications to find, notify, and capture Instant Response from employees and customers, ensuring that the right people are working on the right problem at the right time.

Vayusphere's primary product, the Instant Response Server (IRIS), is an application server for the Instant Messaging (IM) market. While the IRIS product can be delivered using a variety of IM products, Vayusphere offers Vayusphere Instant Messaging (VIM), an enterprise grade secure Instant Messaging product solution for corporate deployments. It offers unique features that enhance a users interaction with enterprise applications.

Vayusphere Instant Messaging

Vayusphere Instant Messaging provides secure and reliable Instant Messaging for your enterprise. This highly efficient and flexible messaging server enables instant communication of critical data to users in real-time. With VIM, your enterprise employees can remain in constant contact with one another and with mission critical applications all in one easy-to-use interface.

Riding the IM Wave

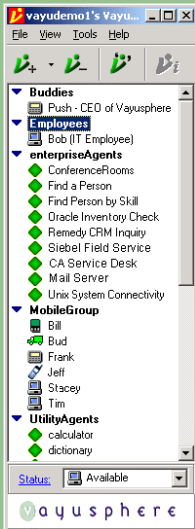
More than just a clever way to talk to people on-line, IM is changing the way people work and communicate. In fact, the research firm IDC predicts the number of global corporate IM users will increase more than tenfold from 18.4 million in 2000 to 229.2 million in 2005.

The Power of Presence

What distinguishes IM from other communication mediums is the notion of *Presence* – an indication of another IM user's on-line status and availability. VIM has the ability to store and propagate multiple users' presence data. When combined with a user's device-type and personal information, presence provides important context to a messaging session that allows all participants to adjust their communication to best match the situation. Additionally, when a user is completely offline, VIM stores messages and then forwards them to the user at their next login. Users can also specify an alternate SMS or email delivery location when they are away, and incoming messages are forwarded accordingly.

Benefits of IM and Vayusphere IM

- Securing your environment.** Unlike consumer IM applications, VIM is installed behind your company's firewall, and all VIM clients communicate through encrypted connections to provide security outside the firewall. Using strong (64 or 128-bit key) security, VIM ensures that proprietary conversations and data stay confidential within the firewall.
- Audit your communication.** VIM provides standard and custom filters that will log messages that are compliant to SEC, NASD, and HIPAA requirements. The filtering functionality can be used to process messages in transit, such as placing signatures or warning on messages based on content. Filters can also generate alarms or alert the users during a conversation when sensitive content is discussed.
- Facilitating communication.** VIM uses the familiar contact list paradigm to manage a user's contact lists and permissions. A contact list contains other users and agents from which a user wants to receive presence updates, messages, and alerts, making the VIM the single sign-on communication portal for your enterprise. Contact lists can contain groups administered by a system administrator and be used for broadcasting messages to groups by administrators or end users. The enhanced group messaging functionality in VIM enables instant collaboration within a group with a single click.
- Leveraging your infrastructure.** VIM seamlessly integrates with the commonly found servers, clients and authentication servers in an enterprise. VIM Supports all the popular LDAP servers so you can leverage your existing infrastructure to authenticate users. VIM can run on Linux, Solaris, or Windows 2000 and offers clients on the common wired and wireless enterprise devices.
- Maximizing your resources.** VIM is a standalone instant messaging service that you can install within 30 minutes and deploy across your enterprise. Simply use the appropriate configuration to support your enterprise communication needs. You don't need to purchase other groupware software that includes features and functions that you'll never use. VIM's architecture will scale to the largest enterprises with diverse and changing platform requirements.



Extending your enterprise with the Instant Response Server (IRiS) Solution

Today, the Internet and mobile devices enable both wired and wireless users to access enterprise information. However, WAP and other query and response mechanisms require a user to initiate the communication session and navigate through data on small screens. Extending the IM benefits of VIM with the Instant Response Server (IRiS), you can quickly connect your applications and provide actionable alerts for business critical applications, such as forwarding customer leads/inventory information to your sales organization in the field or sending trouble tickets to field service personnel.

At the heart of the IRiS technology are *Response Agents*, small footprint applications that enable the interaction of the user with enterprise applications on an IM service. These Response Agents integrate the user's context – presence, availability, location, device type – to the application's context and workflow state, to increase the effectiveness and the timeliness of the interaction.

The Instant Response Server solution provides out-of-the-box connectivity to enterprise applications and services and offers a suite of tools for rapid Response Agent development.

Core Features of VIM

- **Encrypted Messaging** – VIM offers 128-bit key encryption on all clients for corporate-grade secure messaging.
- **Audit Trails** – VIM provides client-side and server-side logging of full IM transcripts for IM and chat rooms.
- **Wireless connectivity managers** – VIM includes a WAP gateway phones. RIM, Palm and PocketPC clients are also available. You can also send and receive IMs to and from a mobile email devices like pagers, and cell phones.
- **Offline and idle message forwarding** – VIM provides idle status information with the option to store offline messages or forward them to an SMS or email address.
- **Alerting Interface** – Send IMs from your application to alert users through our HTTP or email interface.
- **Presence Interface** – Make your application presence aware using the HTTP API to get and set presence.
- **Firewall** – VIM clients support Firewall and HTTP Tunneling.
- **Managed Groups** – Administrators can setup groups that are assigned to user's contact list. That way each user does not have to manage his/her own contact list. Groups facilitate collaboration as VIM enables single-click messaging and chat invitations for groups.
- **Service portal** – The portal provides white pages, user account user and group administration, and lost password generation.
- **VIM Administrator Console** – The console offers server monitoring and detailed reporting capabilities.
- **Scalable messaging components** – VIM can scale to hundreds of thousands of users by adding servers.
- **Expanded Presence and Availability** – VIM provides real-time user presence information with a permission system to control access, as well as supports propagation of device-type, user status, and user profile information.
- **Conference rooms** – VIM supports conference rooms with participation from any device and group chats initiated with a single click. Chat rooms are logged for audit purposes.
- **Provisioning** – Bulk-load users or let users self-provision via the Web provisioning interface.
- **Integrates to existing authentication servers** – Authenticate with your existing authentication server, e.g. Microsoft Active Directory, Sun ONE, Novell eDirectory, IBM Directory Server, and OpenLDAP
- **Branding capabilities** – You can privately brand VIM clients and the Website integration portal, as well as create standard groups that are automatically added to every user's contact list.

System Requirements

Using single, dual, and multi machine configurations, Vayusphere IM can scale to millions of registered users and thousands of concurrent sessions. VIM supports:

- Operating Systems: Solaris, Windows 2000, Linux
- Minimum Hardware: Sun SPARC or Intel 450Mhz CPU, 384MB RAM, 1 GB free Disk Space
- SDK: Java, Web Service, Microsoft .Net, Perl, HTTP

Vayusphere IM clients:

- Windows 98/NT/2000 desktops
- Java Applet
- Palm OS PDAs and smart phones
- RIM 950/957 devices
- WAP-enabled phone browsers
- PocketPC

How to Proceed

Vayusphere IM is available immediately. Please contact Vayusphere sales toll free at +1-650 960 2900 or email sales@vayusphere.com.

Further information about Vayusphere and Vayusphere IM can be found at: www.vayusphere.com.